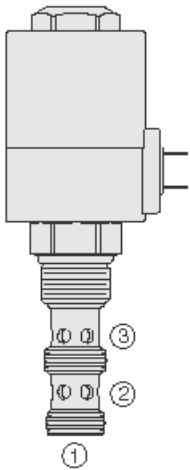




Overview



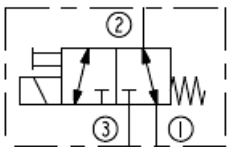
Description

A solenoid operated, two position, three way, direct acting spool valve. When de-energized, the SV12-34X allows flow from port 2 to port 1, while blocking flow at port 3. When energized, the spool shifts to open from port 3 to port 2 while blocking port 1. While port 1 may be fully pressurized, it is not intended to be used as an inlet.

Features

- Manual override options.
- Continuous-duty rated coil.
- Hardened precision spool and cage for long life.
- Optional coil voltages and terminations.
- All ports may be fully pressurized.
- Heavy-duty waterproof coils rated up to IP69K.

Symbol



Ratings

Pressure Ratings

Pressure rating	See performance chart
Proof pressure	483 bar (7000 psi)
Burst pressure	690 bar (10000 psi)

Flow Ratings

Flow rating	- Note: See performance chart	
Maximum internal leakage	410 ml/min (25 in ³ /min)	- Note: Max at 241 bar (3500 psi); per NFPA/t 3.5.15m-1986

Other Ratings

Cycle life	1 million cycles at rated pressure and flow	
Response	60 ms	- Note: Pull-in, indication of shift with nominal voltage
	35 ms	- Note: Drop-out, indication of shift with nominal voltage
	100 ms	- Note: Pull-in, per NFPA/T3.5.30-19XX
	80 ms	- Note: Drop-out, per NFPA/T3.5.30-19XX
Environmental rating	Ip67 (with integral connectors)	

Temperature Ratings

Operating fluid temperature	-40 to 100 °C (-40 to 212 °F)	- Note: With buna N seals
	-26 to 204 °C (-15 to 400 °F)	- Note: With viton seals
	-54 to 107 °C (-65 to 225 °F)	- Note: With polyurethane seals
Storage temperature	-40 to 70 °C (-40 to 160 °F)	
Ambient temperature	-40 to 70 °C (-40 to 160 °F)	

Operating Parameters

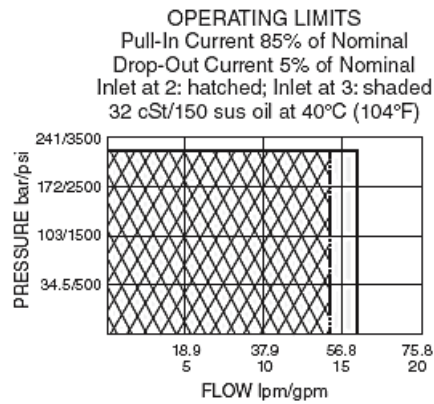
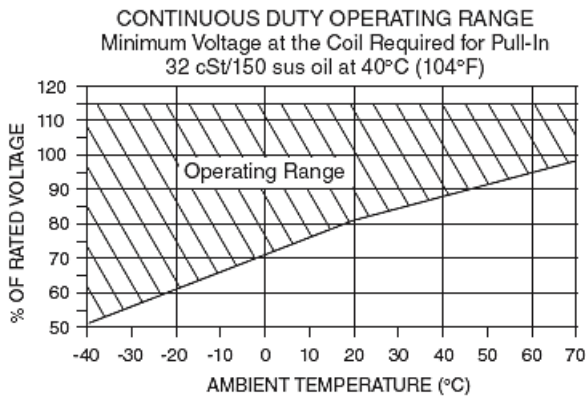
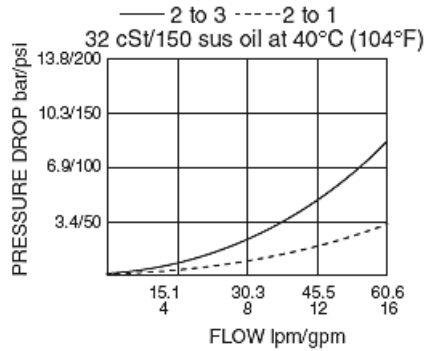
Fluids	Mineral based or synthetic hydraulic fluid with lubricating properties
Fluid viscosity range	7.4 to 420 cSt
Maximum operating contamination level	20/18/14 per ISO 4406



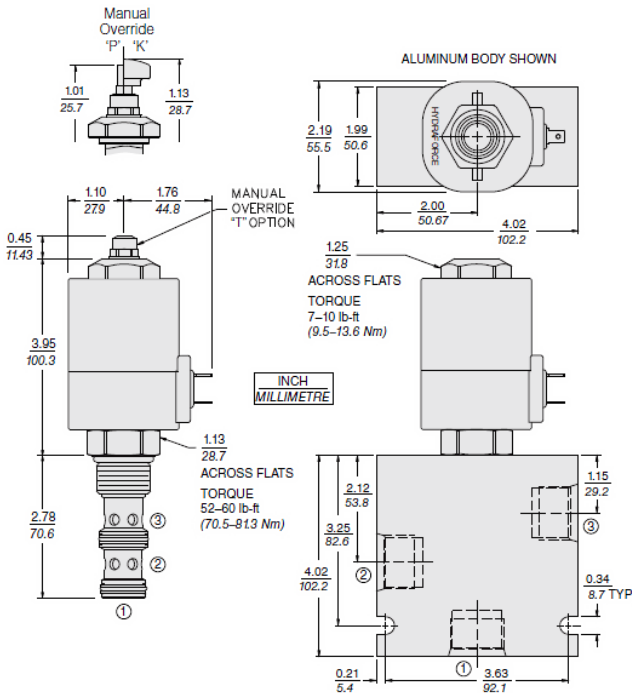
Properties

Unit weight	0.39 kg (0.87 lb)
Internal wetted surface area	330 cm ² (51.2 in ²)

Performance



Dimensions





Installation Specifications

Cavity	VC12-3
Cartridge installation torque	70.5 to 81.4 N-m (52 to 60 ft-lb)
Coil nut torque	9.5 to 13.6 N-m (7 to 10 ft-lb)
Orientation restriction	None

Accessories

Seal kit	SK12-3X-MM	- Note: X = seal option
----------	------------	--------------------------------

Order Code

SV12-34 - - -

Option	(Blank)				
Manual Override without Knob	P				
Manual Override with Knob	K				
Manual Override Threaded with Detent	T				
Porting					
Cartridge Only	0				
SAE 12	12T				
3/4 in. BSP*	6B				
		Seals			
		N Buna N (Std.)			
		V Fluorocarbon			
		P Polyurethane			
			Voltage		
			0 Less Coil		
			12 12 Vdc		
			24 24 Vdc		
				Terminations (Vdc)	
				EL Leadwires (2), IP65 Rated	
				ES Dual Spades, IP65 Rated	
				EG DIN 43650, IP65 Rated	
				EW Leads w/Weather-Pack® Connector, IP65 Rated	
				EY Metri-Pack® 150 Connector, IP69K Rated	
				ER Deutsch Connector, IP69K Rated	

*BSP Body; U.K. Mfrs. Only

Coils with internal diode are available. Consult factory.

Other coil voltages may be available for OEM applications. Consult factory.

Model Options

SV12-34E-H-J-L

E Manual Override

CODE	DESCRIPTION
BLANK	NONE
K	Momentary Push Override, Knob
P	Momentary Push Override, Button
T	Variable Position Override, Slotted Screw

H Line Body

CODE	DESCRIPTION
0	No Body
8T	Aluminum SAE 8
10T	Aluminum SAE 10
12T	Aluminum SAE 12
12TD	Ductile Iron SAE 12
6B	Aluminum BSPP 3/4" (6)

J Seal

CODE	DESCRIPTION
N	Buna-N
V	Fluorocarbon
P	Polyurethane
U	PPDI Urethane

L Coil

CODE	DESCRIPTION
0	No Coil
12EG	12 VDC, E-Coil, DIN 43650



CODE	DESCRIPTION
12EL	12 VDC, E-Coil, Dual Lead Wires
12EL/W	12 VDC, E-Coil, Dual Lead Wires with WeatherPak
12ER	12 VDC, E-Coil, Deutsch
12ER/Z	12 VDC, E-Coil, Deutsch with Zener Diode
12ES	12 VDC, E-Coil, Dual Spade
12EY	12 VDC, E-Coil, Metri-Pack 150
24EG	24 VDC, E-Coil, DIN 43650
24ER	24 VDC, E-Coil, Deutsch
24ER/Z	24 VDC, E-Coil, Deutsch with Zener Diode
24ES	24 VDC, E-Coil, Dual Spade